

SPECIFICATIONS

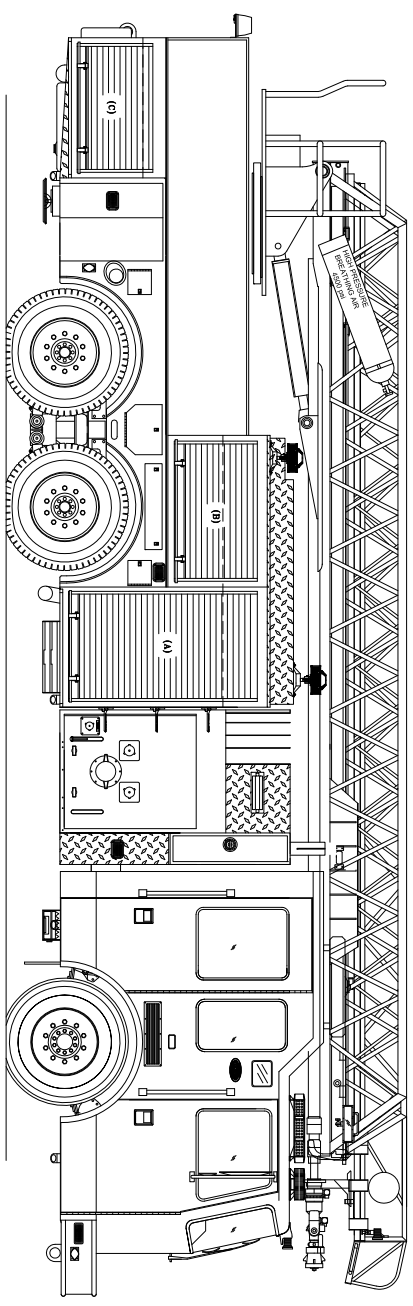
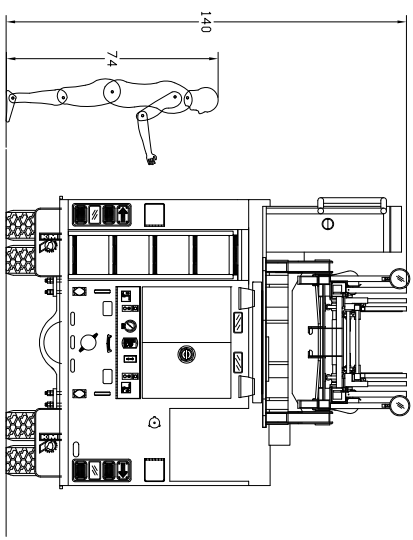
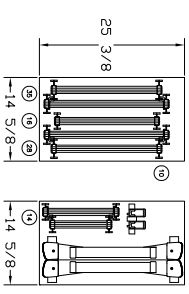
GLASSIS-OPERATOR X-ARD W/ 6" RAISED ROOF AND 6" POOS
 ENGINE: CHRYSLER 500 HP W/ ENGINE BRAKE
 TRANSMISSION: ALISON EVS4000 5 SPEED AUTOMATIC
 FRONT AXLE: MERITOR RT-52-133A-N #22200
 REAR AXLE: MERITOR RT-52-185 #54,000
 PUMP: HALF OMAK-225 2250 GPM SINGLE STAGE
 TANK: 550 GALLON UPE POLYUE TANK W/ INTEGRAL 50 GALLON FOAM

COMPARTMENT SIZE

Letter	Door Opening [in]	Internal Compartment Size [in]			
Designation	Height	Width	Height	Width	Depth
(A)	66	70-1/2	54	42	27 / 14
(B)	29	49	33-1/2	17	43
(C)	29-1/2	45	31	23	49
(D)	21-1/2	86	80	90	27
(E)	33-1/2	45	49	37	27 / 10-1/2

NOTE: ACTUAL DOOR OPENING HEIGHTS ARE REDUCED BY ~3.75" AND WIDTHS BY ~2" DUE TO ROLL-UP DOOR TRACKING.

GROUND LADDERS



NOTES

THIS DRAWING IS A GENERAL CONFIGURATION AND MAY NOT NECESSARILY REFLECT ALL CONTRACTUAL OBLIGATIONS

PLEASE REVIEW AND RETURN A SIGNED COPY.

NAME:
 TITLE:
 DATE:

CUSTOMER PAINT CODES:
 LOWER CAB AND BODY: T.B.D.
 CAB TWO TONE: T.B.D.
 LADDER: T.B.D.
 COMPT. INTERIORS: T.B.D.

SYM DATE REVISION DESCRIPTION APP'D

SALES ENGINEER : XXXX



KME FIRE APPARATUS
 ONE INDUSTRIAL COMPLEX
 NESHOSHONG, PA 18240

CAD

DATE SCALE NONE DRAWN BY JLB APPROVED BY PPH
 JOSEPH B. JOSEPH
 KME 100' AERIALCAT LADDER
 #500 TIP LOAD
 MARLBORO TWP. NJ
 PROPOSAL PRINT

DO NOT CHANGE MANUALLY

